

Wind Implementation
Working Group

Joint SET Plan IWG workshop:

R&I NEEDS FOR CO-LOCATION OF OFFSHORE WIND AND OCEAN ENERGY

Friday 18 October 2024 at 10:30 am CEST

OceanSET



#SETPlan



Welcome and Introduction

Capucine Vannoorenberghe, WindEurope, ETIPWind and IWG Wind Secretariat



Agenda

Timing	Topic	Speakers
10:30-10:45	Welcome and introduction of the joint ETIPWind / ETIP Ocean report	Capucine Vannoorenberghe, WindEurope Lotta Pirttimaa, Ocean Energy Europe
10:45-11:15	Thematic presentations	Emilie-Marie Mercier, European Projects Director, EDF Tim Hurst, Wave Energy Scotland & IWG Ocean co-Chair Ozlem Ceyhan, Wind expert, IMDC
11:15-11:50	Breakout sessions	Moderated discussions exploring the main issues, benefits and potential barriers for co-located projects
11:50-12:00	Report from breakout sessions	Breakout group moderators
12:00-12:25	Open discussion on potential joint R&I topics	Moderated by IWG Wind and IWG Ocean Secretariats
12:25-12:30	Closing remarks	Gianmaria Sannino, Head of modelling, observations and scenarios for climate change, ENEA & OE-IWG co-Chair



Introduction of ETIPWind-ETIP Ocean joint report

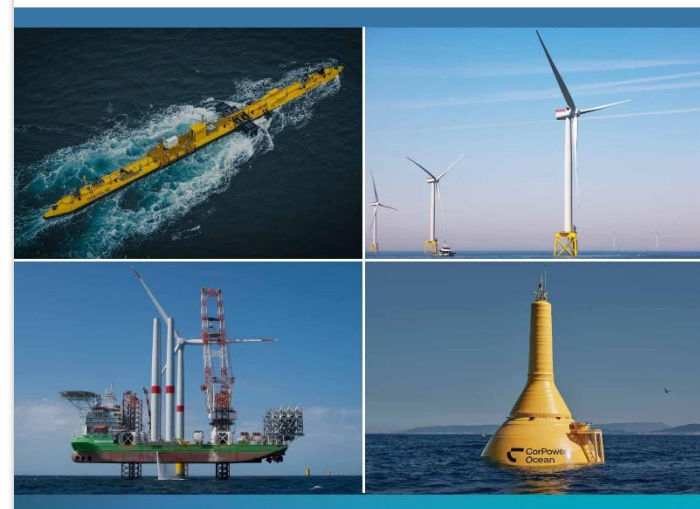
Lotta Pirttimaa, Ocean Energy Europe, ETIP Ocean Secretariat



#SETPlan

Joint report by ETIPWind & ETIP Ocean

- Europe has an untapped potential of offshore renewables
 - 4,673 GW of bottom-fixed and floating offshore wind
 - 130 GW of wave and tidal energy
 - Practical potential
- The report outlines the main R&I and policy priorities that will unlock this potential



Offshore renewables paving the way for a competitive and climate-neutral Europe by 2050

A joint report from:

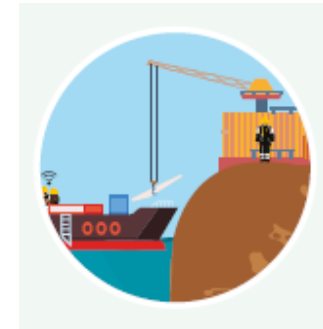
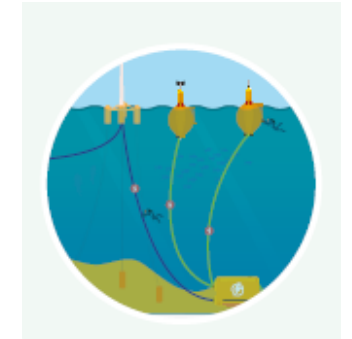


A supportive policy framework at both EU and national level

- Create market visibility through a clear auctioning calendar
- Improve Maritime Spatial Planning & streamline permitting
- Implement public financing mechanisms to attract private investors
- Scale-up, optimise, digitalise & future-proof European grids

Common R&I priorities for offshore wind and ocean energy

- Analysis of system integration needs to support the development of co-located projects
- Quick connect/disconnect systems for mooring lines & for inter-array cables
- Optimisation of logistics, including ports
- Development of innovative health monitoring systems for structural and functional relevant components



You can download the report here:





Thematic presentations



Breakout sessions



Report from breakout sessions



Closing remarks

Gianmaria Sannino, Head of modelling, observations and scenarios for climate change, ENEA & OE-IWG co-Chair



Thank you!

#SETPlan



© European Union 2023

Reuse is authorised provided the source is acknowledged and the original meaning or message of the document are not distorted. The European Commission shall not be liable for any consequence stemming from the reuse. The reuse policy of the European Commission documents is implemented by Commission Decision 2011/833/EU of 12 December 2011 on the reuse of Commission documents (OJ L 330, 14.12.2011, p. 39). All images © European Union, unless otherwise stated.